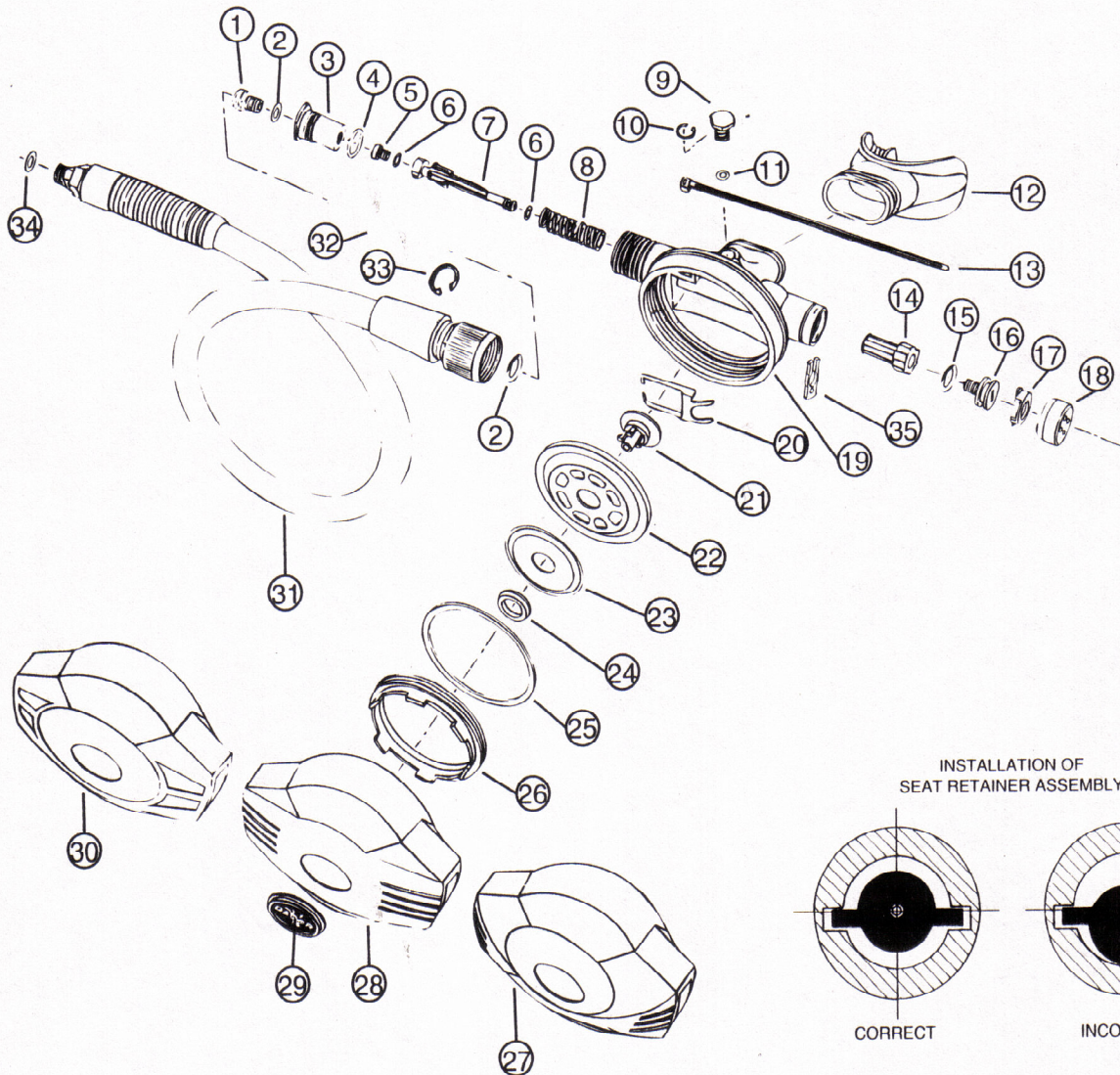


#	QTY	PART #	KEY	DESCRIPTION	#	QTY	PART #	KEY	DESCRIPTION
1	1	0182-87		VALVE SEAT	26	1	0624-93		RETAINER, DIAPHRAGM
2	2	0060-02	①	O-RING	27	1	0513-94		TOP COVER, QUANT. BLACK
3	1	0182-88		ADAPTOR, VALVE SEAT	28	1	0514-18		TOP COVER, EXT. ICE BLUE
4	1	0060-22	①	O-RING	29	1	0232-25		DECAL/INSERT ASSM BLACK
5	1	0232-07	①	L.P. SEAT, MECHANICAL		1	0232-26		DECAL/INSERT ASSM BLUE
6	2	0060-61	①	O-RING		1	0232-31		DECAL/INSERT ASSM- ENDURO
7	1	0624-97		SEAT RETAINER	30	1	0513-96		TOP COVER, ENDURO BLACK
8	1	0040-85		SPRING, MECHANICAL TEFLON		1	0514-17		TOP COVER, ENDURO NEON
9	1	0627-89		FLOW TUBE PLUG, NON-ADJ.	31	1	0229-39		HOSE ASSM. 29" IN-LINE ADJ.
10	1	0250-22		RETAINING RING		1	0229-40		HOSE ASSM. 39" IN-LINE ADJ.
11	1	0060-16	①	O-RING	32	1	0121-02		FRICTION WASHER
12	1	0300-67		MOUTHPIECE	33	1	0250-24		RETAINING RING, L.P. HOSE
13	1	0310-11	①	CLAMP	34	1	0060-51		O-RING
14	1	0625-20		ADJUSTING CHAMBER	35	1	0628-02	①②	RETAINING CLIP
15	1	0060-96	①	O-RING					
16	1	0625-05		SHAFT, NON-ADJ.					
17	1	0625-61	①②	CLIP, RETAINER					
18	1	0625-04		END CAP					
19	1	0614-59		BOTTOM BOX					
20	1	0170-91		LEVER S.S.					
21	1	0624-91		CORE, DIAPHRAGM					
22	1	0050-18		DIAPHRAGM ASSM.					
23	1	0240-14		EXHAUST VALVE					
24	1	0624-92		RETAINER, DIAPHRAGM CORE					
25	1	0120-98		FRICTION WASHER					



EXTREME ICE / QUANTUM / ENDURO
MECHANICAL SECOND STAGE

9/93

Second Stage
Regulators

PAGE

2-41

KEY

① Included in annual service kit #9680-23

② 0628-02 Retaining clip (35) replaces 0625-61 retaining clip (17).