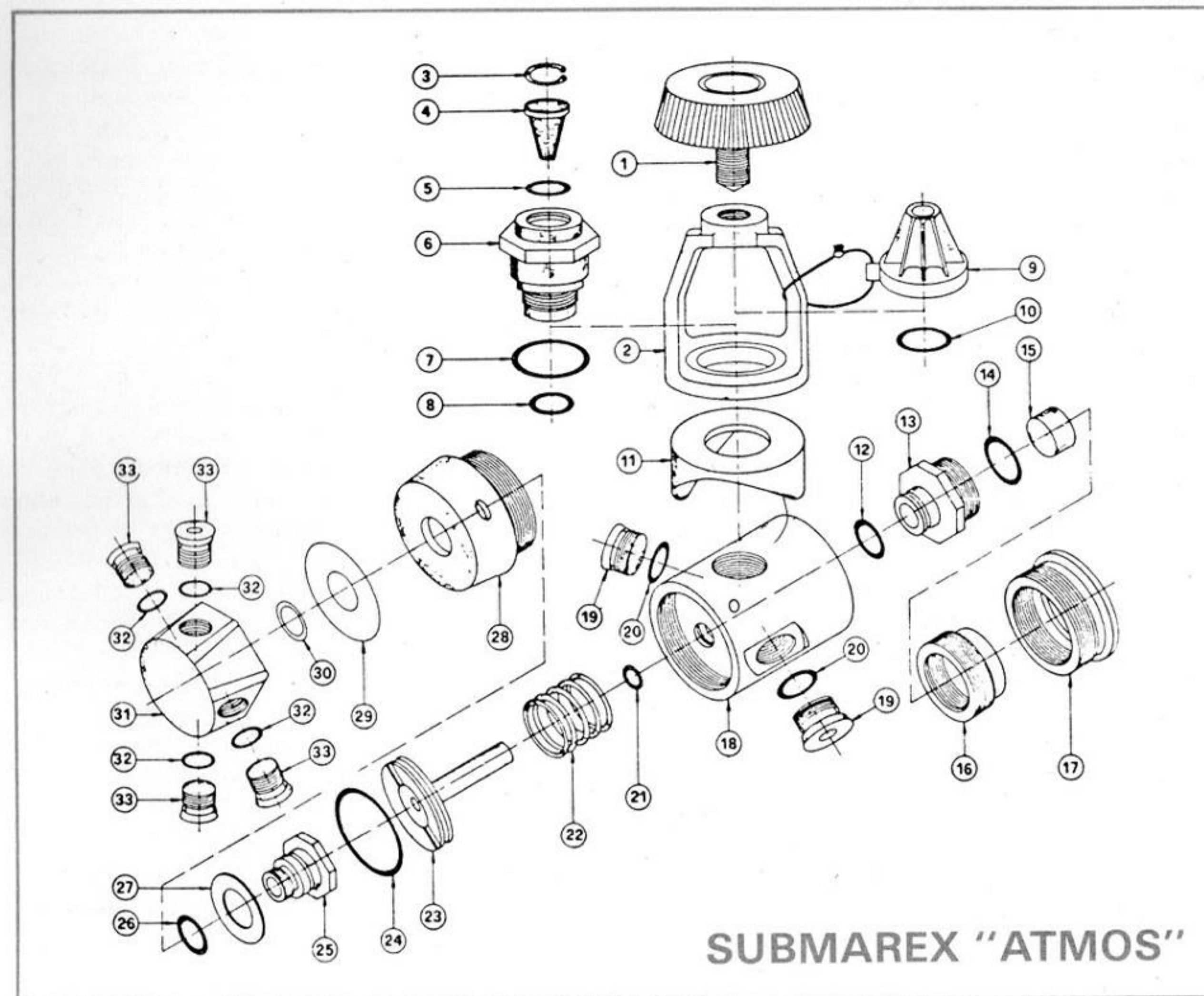


SUBMAREX "ATMOS"

Second Stage

No.	Qty.	Part No.	Description	No.	Qty.	Part No.	Description
1	1	50-010-001	Mouthpiece	18	1	50-010-018	D.V. stem
2	1	50-010-002	Mouthpiece strap	19	1	50-010-019	D.V. spring
3	4	50-010-003	Screw	20	1	50-010-020	Injection nozzle
4	1	50-010-004	Case—black	21	1	50-010-021	O-ring
	1	50-010-104	Case—orange	22	1	50-010-022	D.V. housing
	1	50-010-204	Case—blue	23	1	50-010-023	Retaining pin
5	1	50-010-005	Exhaust valve	24	1	50-010-024	Lever
6	1	50-010-006	Retaining cylinder	25	1	50-010-025	Lanyard optional
7	1	50-010-007	Diaphragm	26	1	50-010-026	O-ring
8	1	50-010-008	Cover assy.				2nd Stage complete
9	3	50-010-009	Screw				
10	1	50-010-010	L. P. hose	*		50-010	Case black
11	1	50-010-011	O-ring				Cover polished chrome
12	1	50-010-012	O-ring	*		50-020	Case orange
13	1	50-010-013	Housing retainer				Cover polished chrome
14	1	50-010-014	O-ring	*		50-030	Case blue
15	1	50-010-015	O-ring				Cover polished chrome
16	1	50-010-016	Adjustable orifice				50-010-122
17	1	50-010-017	Valve seat				50-010-030
							D.V. Assy (not shown)
							Safe plug optional (not shown)



SUBMAREX "ATMOS"

50-100 1st Stage International 200 bar

No.	Qty.	Part No.	Description	No.	Qty.	Part No.	Description
1	1	50-100-029	Yoke Screw	18	1	50-100-014	Body
2	1	50-100-028	Yoke	19	2	50-100-030	H.P. plug
3	1	50-100-027	Filter retainer	20	2	50-100-031	O-ring
4	1	50-100-026	Filter	21	1	50-100-015	O-ring
5	1	50-100-025	O-ring	22	1	50-100-012	Spring
6	1	50-100-024	Yoke retainer	23	1	50-100-011	Piston
7	1	50-100-021	O-ring	24	1	50-100-013	O-ring
8	1	50-100-023	O-ring	25	1	50-100-006	Swivel retainer
9	1	50-100-033	Protection cap	26	1	50-100-010	O-ring
10	1	50-100-032	O-ring	27	1	50-100-008	Washer
11	1	50-100-022	Saddle	28	1	50-100-009	Piston cap
12	1	50-100-019	O-ring	29	1	50-100-005	Washer
13	1	50-100-016	Seat retainer	30	1	50-100-004	Gasket
14	1	50-100-007	O-ring	31	1	50-100-001	Swivel
15	1	50-100-020	Seat	32	3	50-100-003	O-ring
16	1	50-100-017	Adjustment cap	33	3	50-100-002	L.P. plug
17	1	50-100-018	Guide screw (L.H. thread)				
						50-100	1st Stage complete